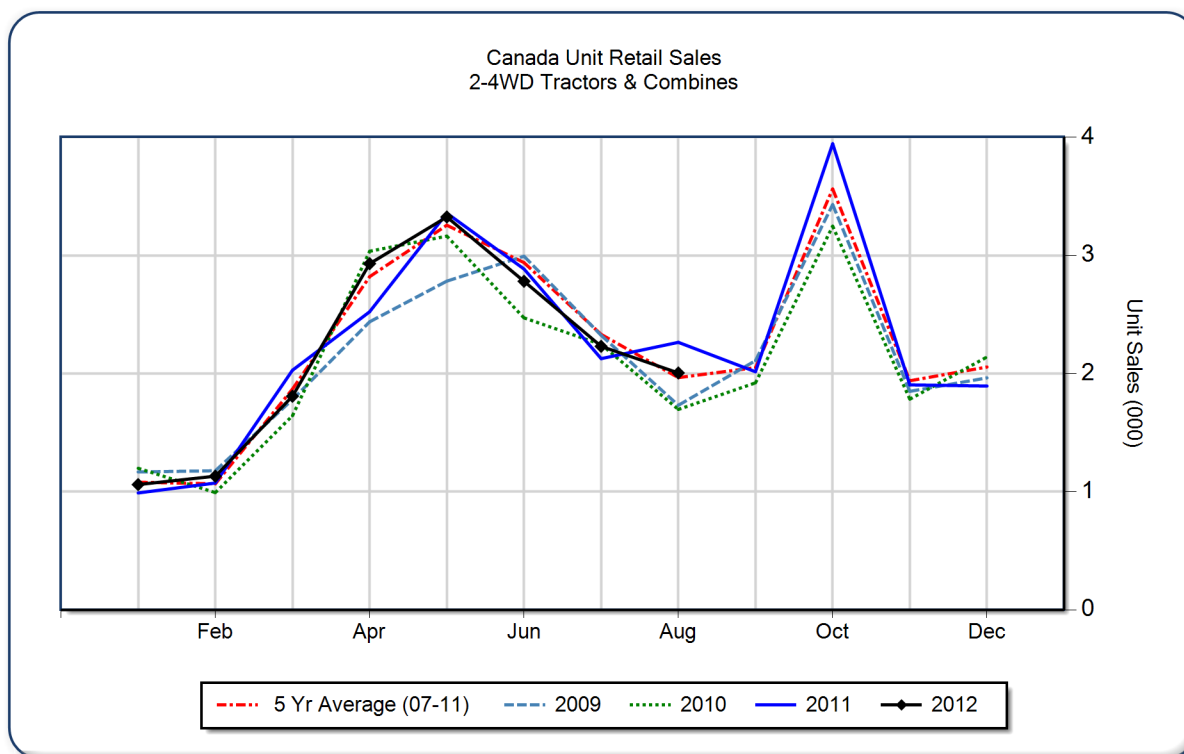


## August 2012 Flash Report Canada Unit Retail Sales

Copyright, AEM. All rights reserved. If data is referenced, please acknowledge AEM as the source.

	August			YTD - August			Beginning Inventory Aug 2012
	2012	2011	%Chg	2012	2011	%Chg	
<b>2WD Farm Tractors</b>							
< 40 HP	907	859	5.6	8,069	7,864	2.6	8,530
40 < 100 HP	393	483	-18.6	3,865	3,934	-1.8	3,785
100+ HP	241	348	-30.7	2,891	2,687	7.6	2,049
<b>Total 2WD Farm Tractors</b>	<b>1,541</b>	<b>1,690</b>	<b>-8.8</b>	<b>14,825</b>	<b>14,485</b>	<b>2.3</b>	<b>14,364</b>
<b>4WD Farm Tractors</b>	<b>66</b>	<b>84</b>	<b>-21.4</b>	<b>904</b>	<b>874</b>	<b>3.4</b>	<b>468</b>
<b>Total Farm Tractors</b>	<b>1,607</b>	<b>1,774</b>	<b>-9.4</b>	<b>15,729</b>	<b>15,359</b>	<b>2.4</b>	<b>14,832</b>
<b>Self-Prop Combines</b>	<b>398</b>	<b>490</b>	<b>-18.8</b>	<b>1,541</b>	<b>1,886</b>	<b>-18.3</b>	<b>903</b>



*These data are, in part, estimates that are subject to revisions when final detail data become available. Because of the seasonal nature of the industry, comparisons of monthly data from one period to another should be done with extreme caution. These data represent most, but not all, of the manufacturers in each product category being sold at retail in Canada.*

**Restricted Information from the Association of Equipment Manufacturers**