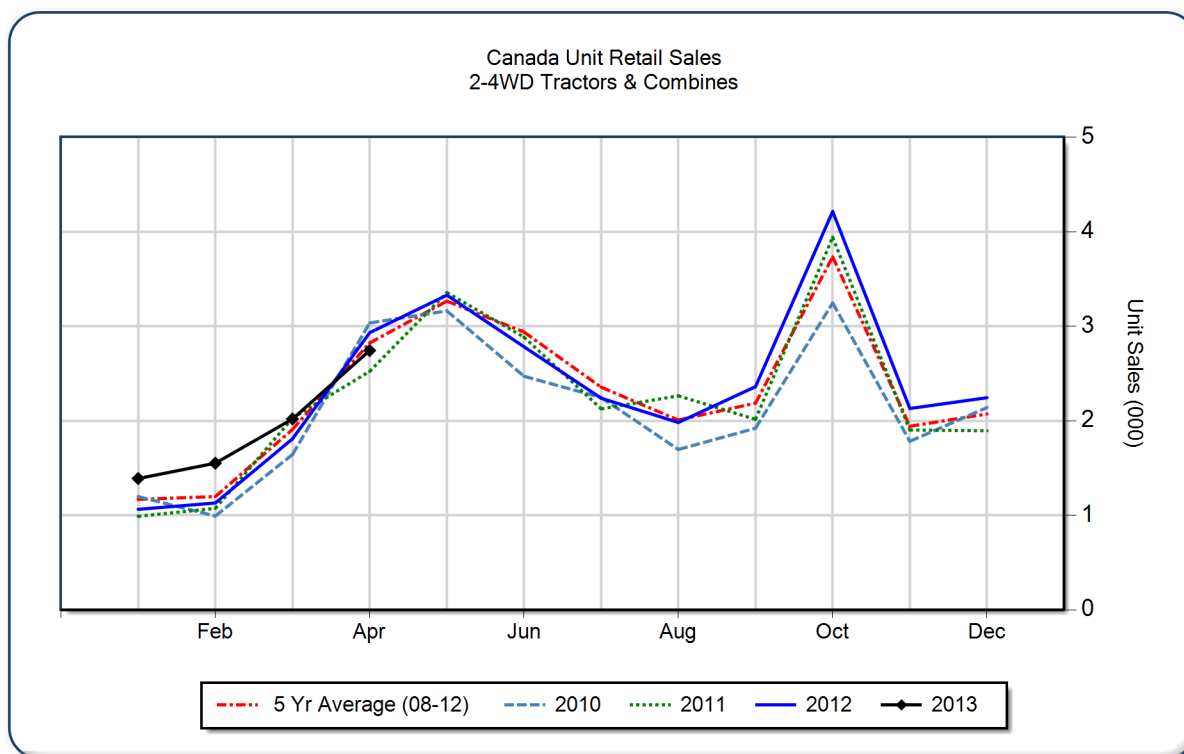


### April 2013 Flash Report Canada Unit Retail Sales

Copyright, AEM. All rights reserved. If data is referenced, please acknowledge AEM as the source.

	April			YTD - April			Beginning Inventory Apr 2013
	2013	2012	%Chg	2013	2012	%Chg	
<b>2WD Farm Tractors</b>							
< 40 HP	1,290	1,269	1.7	3,096	2,670	16.0	8,772
40 < 100 HP	494	661	-25.3	1,718	1,825	-5.9	3,341
100+ HP	516	608	-15.1	1,660	1,484	11.9	2,421
<b>Total 2WD Farm Tractors</b>	<b>2,300</b>	<b>2,538</b>	<b>-9.4</b>	<b>6,474</b>	<b>5,979</b>	<b>8.3</b>	<b>14,534</b>
<b>4WD Farm Tractors</b>	<b>215</b>	<b>269</b>	<b>-20.1</b>	<b>620</b>	<b>535</b>	<b>15.9</b>	<b>632</b>
<b>Total Farm Tractors</b>	<b>2,515</b>	<b>2,807</b>	<b>-10.4</b>	<b>7,094</b>	<b>6,514</b>	<b>8.9</b>	<b>15,166</b>
<b>Self-Prop Combines</b>	<b>229</b>	<b>125</b>	<b>83.2</b>	<b>609</b>	<b>420</b>	<b>45.0</b>	<b>856</b>



*These data are, in part, estimates that are subject to revisions when final detail data become available. Because of the seasonal nature of the industry, comparisons of monthly data from one period to another should be done with extreme caution. These data represent most, but not all, of the manufacturers in each product category being sold at retail in Canada.*

**Restricted Information from the Association of Equipment Manufacturers**