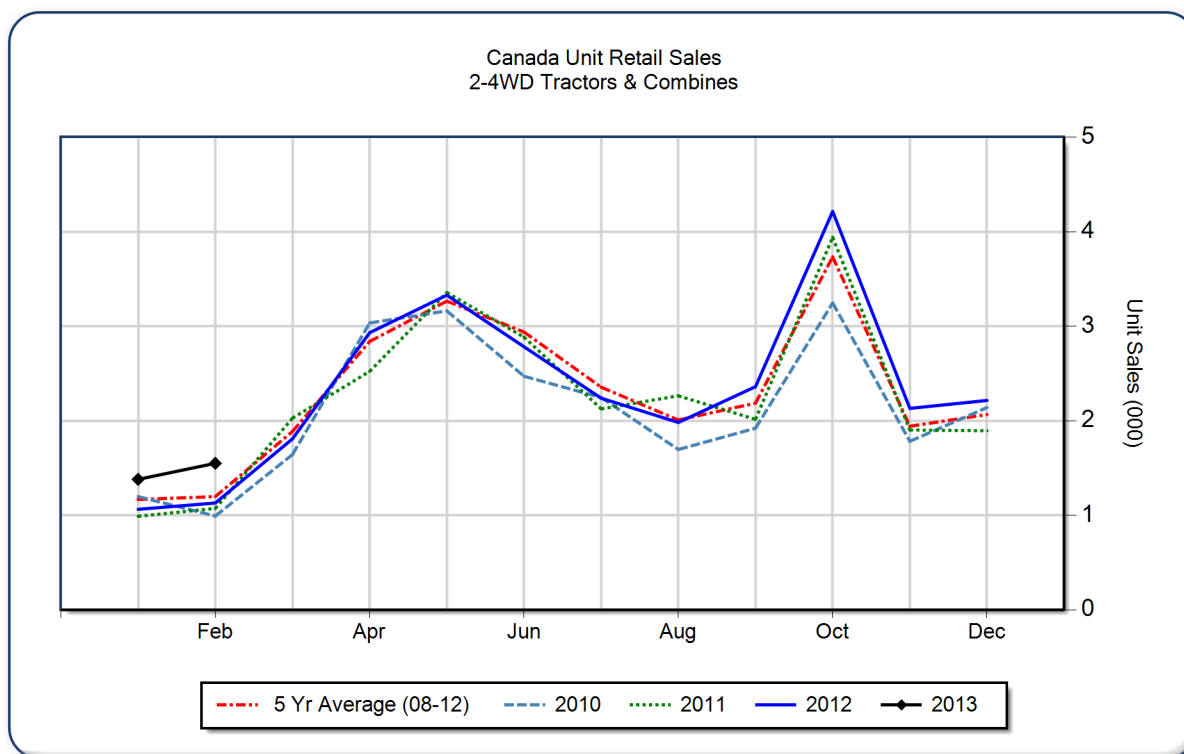


February 2013 Flash Report Canada Unit Retail Sales

Copyright, AEM. All rights reserved. If data is referenced, please acknowledge AEM as the source.

	February			YTD - February			Beginning Inventory Feb 2013
	2013	2012	%Chg	2013	2012	%Chg	
2WD Farm Tractors							
< 40 HP	499	373	33.8	1,048	748	40.1	8,064
40 < 100 HP	391	388	0.8	771	734	5.0	3,273
100+ HP	425	249	70.7	695	464	49.8	2,285
Total 2WD Farm Tractors	1,315	1,010	30.2	2,514	1,946	29.2	13,622
4WD Farm Tractors	146	64	128.1	249	109	128.4	473
Total Farm Tractors	1,461	1,074	36.0	2,763	2,055	34.5	14,095
Self-Prop Combines	89	56	58.9	167	138	21.0	548



These data are, in part, estimates that are subject to revisions when final detail data become available. Because of the seasonal nature of the industry, comparisons of monthly data from one period to another should be done with extreme caution. These data represent most, but not all, of the manufacturers in each product category being sold at retail in Canada.

Restricted Information from the Association of Equipment Manufacturers