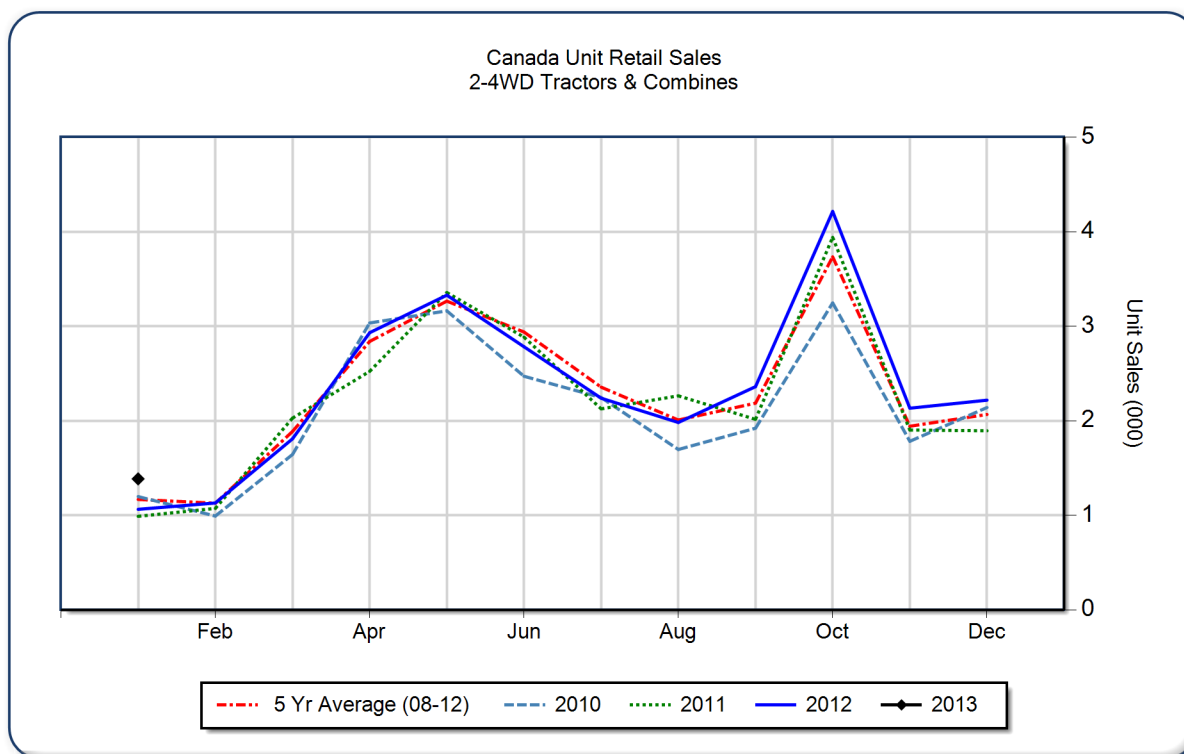


January 2013 Flash Report Canada Unit Retail Sales

Copyright, AEM. All rights reserved. If data is referenced, please acknowledge AEM as the source.

	January			YTD - January			Beginning Inventory Jan 2013
	2013	2012	%Chg	2013	2012	%Chg	
2WD Farm Tractors							
< 40 HP	553	375	47.5	553	375	47.5	7,873
40 < 100 HP	381	346	10.1	381	346	10.1	3,219
100+ HP	270	215	25.6	270	215	25.6	2,087
Total 2WD Farm Tractors	1,204	936	28.6	1,204	936	28.6	13,179
4WD Farm Tractors	103	45	128.9	103	45	128.9	405
Total Farm Tractors	1,307	981	33.2	1,307	981	33.2	13,584
Self-Prop Combines	78	82	-4.9	78	82	-4.9	452



These data are, in part, estimates that are subject to revisions when final detail data become available. Because of the seasonal nature of the industry, comparisons of monthly data from one period to another should be done with extreme caution. These data represent most, but not all, of the manufacturers in each product category being sold at retail in Canada.

Restricted Information from the Association of Equipment Manufacturers