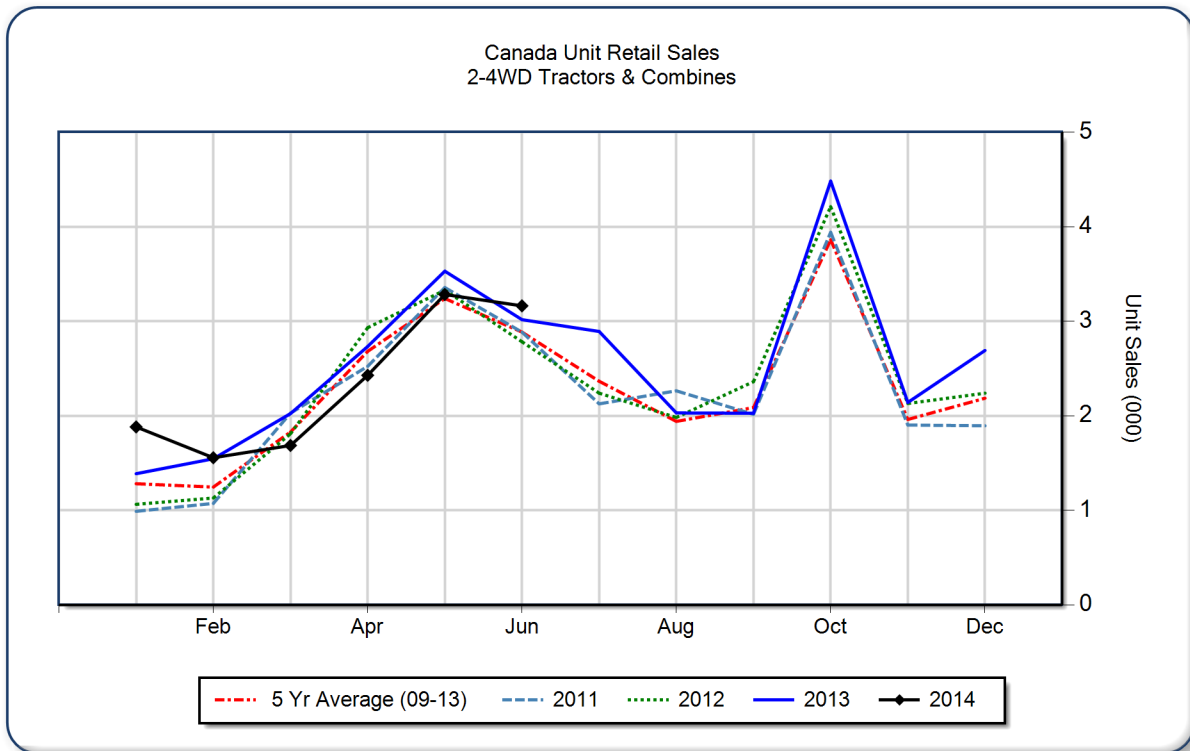


June 2014 Flash Report Canada Unit Retail Sales

Copyright, AEM. All rights reserved. If data is referenced, please acknowledge AEM as the source.

	June			YTD - June			Beginning Inventory Jun 2014
	2014	2013	%Chg	2014	2013	%Chg	
2WD Farm Tractors							
< 40 HP	1,872	1,781	5.1	6,911	6,929	-0.3	7,304
40 < 100 HP	636	509	25.0	3,006	2,837	6.0	3,931
100+ HP	464	448	3.6	2,662	2,643	0.7	2,753
Total 2WD Farm Tractors	2,972	2,738	8.5	12,579	12,409	1.4	13,988
4WD Farm Tractors	57	86	-33.7	660	831	-20.6	604
Total Farm Tractors	3,029	2,824	7.3	13,239	13,240	0.0	14,592
Self-Prop Combines	134	193	-30.6	759	995	-23.7	900



These data are, in part, estimates that are subject to revisions when final detailed data become available. Because of the seasonal nature of the industry, comparisons of monthly data from one period to another should be done with extreme caution. These data represent most, but not all, of the manufacturers in each product category being sold at retail in Canada.

Restricted Information from the Association of Equipment Manufacturers